

# Towards Automated 2D Animation

Hamila Mailee & Rafael Kuffner dos Anjos



Images from Manga109<sup>1</sup>: © Courtesy of Ebihurai  
© Courtesy of Aida Mayumi  
© Courtesy of Shintani Akihiro  
© Courtesy of Kurosawa Tetsuya, Masaki Hidehisa

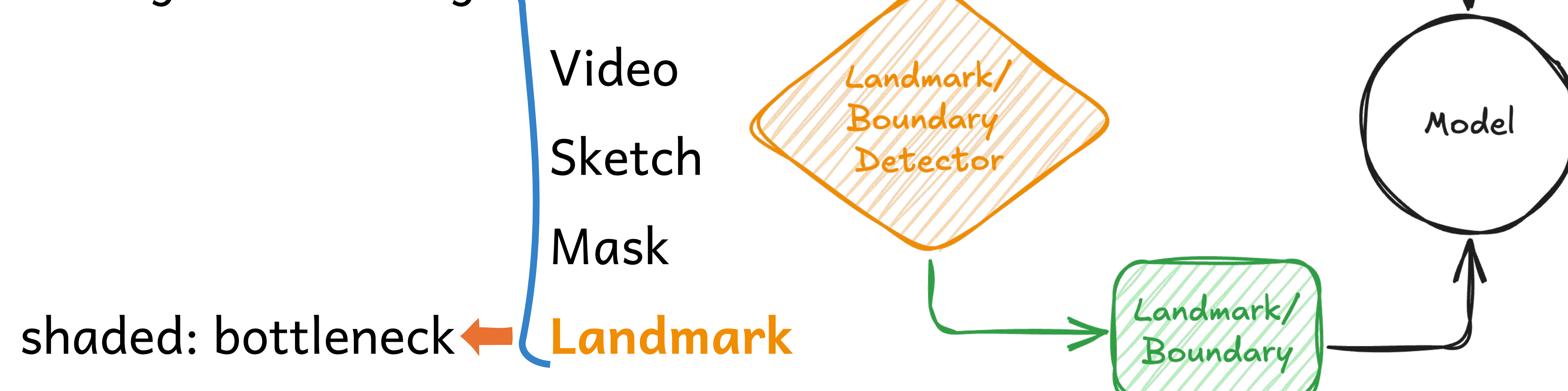
## Abstract

- ✦ Landmark-guided human face manipulation
  - **Great progress:** Dataset ▶ Annotation ▶ Quality
- ✦ ≠ Landmark-guided cartoon face manipulation
  - **Challenges:** Variety, Artist-based, Annotation
- ✦ Starting with annotation: A step to help artists in the industry
- ✦ Simplify: Landmark Detection → Object Detection

**YOLOX-I, YOLOX-Tiny, Faster R-CNN**

## Introduction

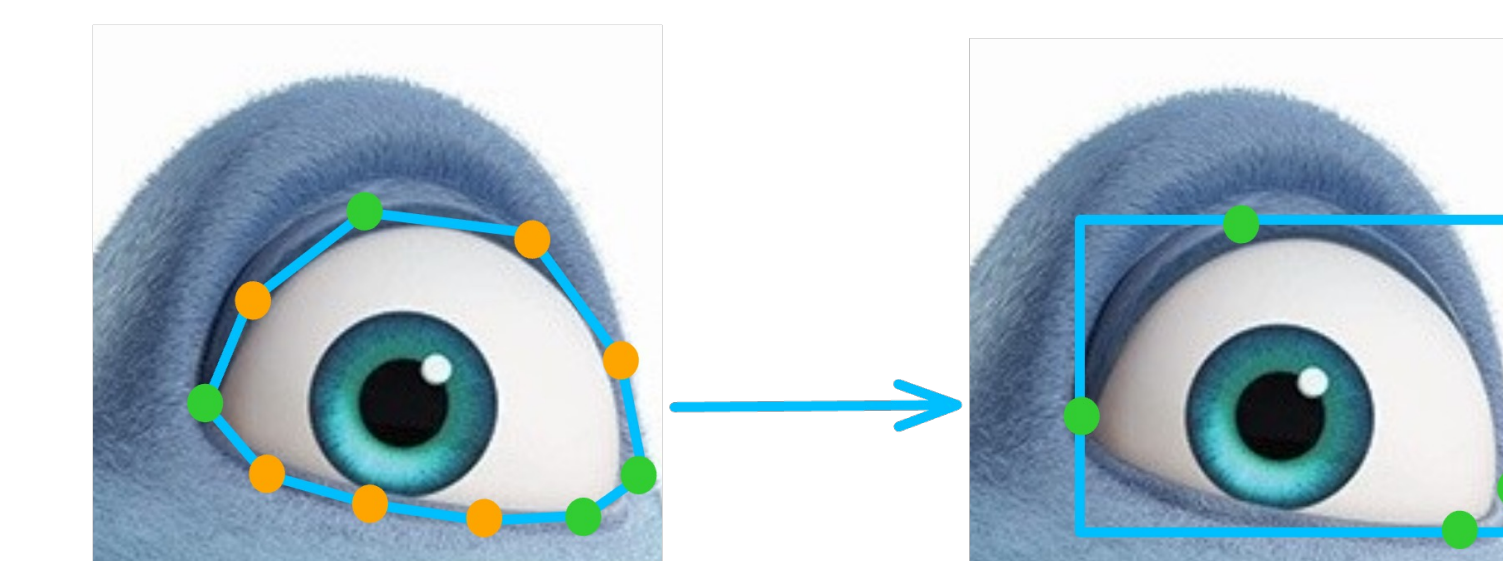
- ✦ Drawing keyframes → Time consuming
- ✦ Audience: Highly sensitive to faces & expressions
- ✦ Artists: Require control over the process
- ✦ 3D editing
  - 3DMM
  - Blendshapes
- ✦ 2D guided editing
  - Text
  - Video
  - Sketch
  - Mask



- ✦ Checking top object detection models for the task

## Dataset

- ✦ The only publicly available landmark annotation:
- ✦ Data: Manga109<sup>1</sup>
- ✦ Annotation: 2,105 faces with 60 landmarks<sup>2</sup>
- ✦ Getting boxes from landmarks:
  - ✦ +15% increase for coverage



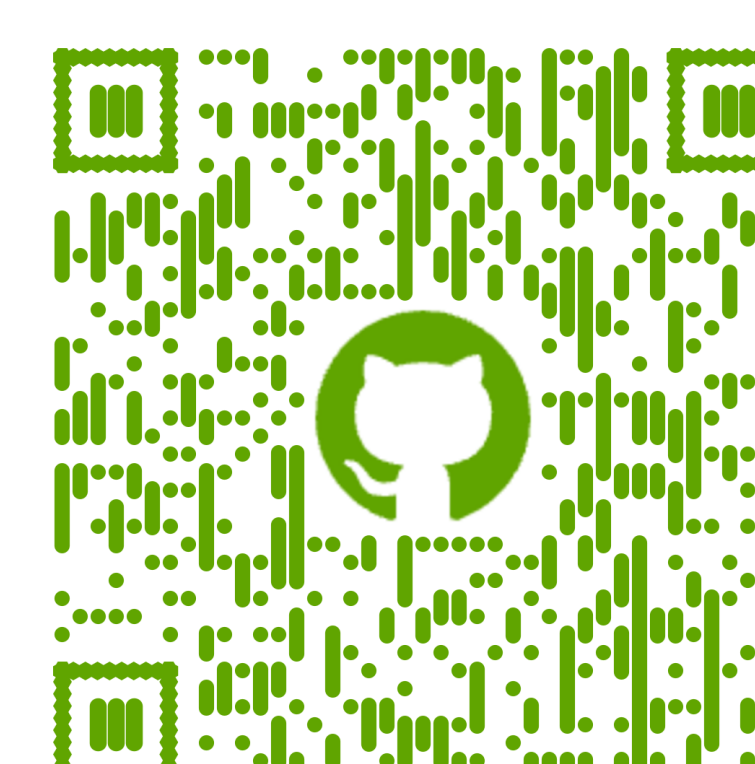
## Experiments

Frame Images: **Ground Truth**, **YOLOX-I**, **YOLOX-Tiny**, and **Faster R-CNN** detection results

Models	mAP	AP <sup>50</sup> <sub>eye</sub>	AP <sup>50</sup> <sub>mouth</sub>	AP <sup>75</sup> <sub>eye</sub>	AP <sup>75</sup> <sub>mouth</sub>	AP <sup>50:95</sup> <sub>eye</sub>	AP <sup>50:95</sup> <sub>mouth</sub>
<b>YOLOX-I</b>	0.48	0.97	0.51	0.76	0.30	0.66	0.30
<b>YOLOX-Tiny</b>	0.57	0.95	0.84	0.71	0.54	0.62	0.52
<b>Faster R-CNN</b>	0.53	0.94	0.87	0.64	0.53	0.57	0.50

Models	FP <sub>eye</sub>	FN <sub>eye</sub>	FP <sub>mouth</sub>	FN <sub>mouth</sub>
<b>YOLOX-I</b>	1372	10	822	22
<b>YOLOX-Tiny</b>	138	19	133	29
<b>Faster R-CNN</b>	189	17	214	18

- ✦ Minimum FPs
- ✦ Acceptable FNs



## References

- [1] Matsui, Yusuke, et al. "Sketch-based manga retrieval using manga109 dataset." *Multimedia tools and applications* 76 (2017): 21811-21838.  
[2] Stricker, Marco, et al. "Facial landmark detection for manga images." *arXiv preprint arXiv:1811.03214* (2018).